

APPENDIX E | ANALYSIS II INFORMATION

*SCHEDULE AND COST SAVINGS DATA FOR THE ALTERNATIVE
CONCRETE CONSTRUCTION PROCESS CAN BE FOUND ON THE
FOLLOWING PAGES.*

REVISED SCHEDULE

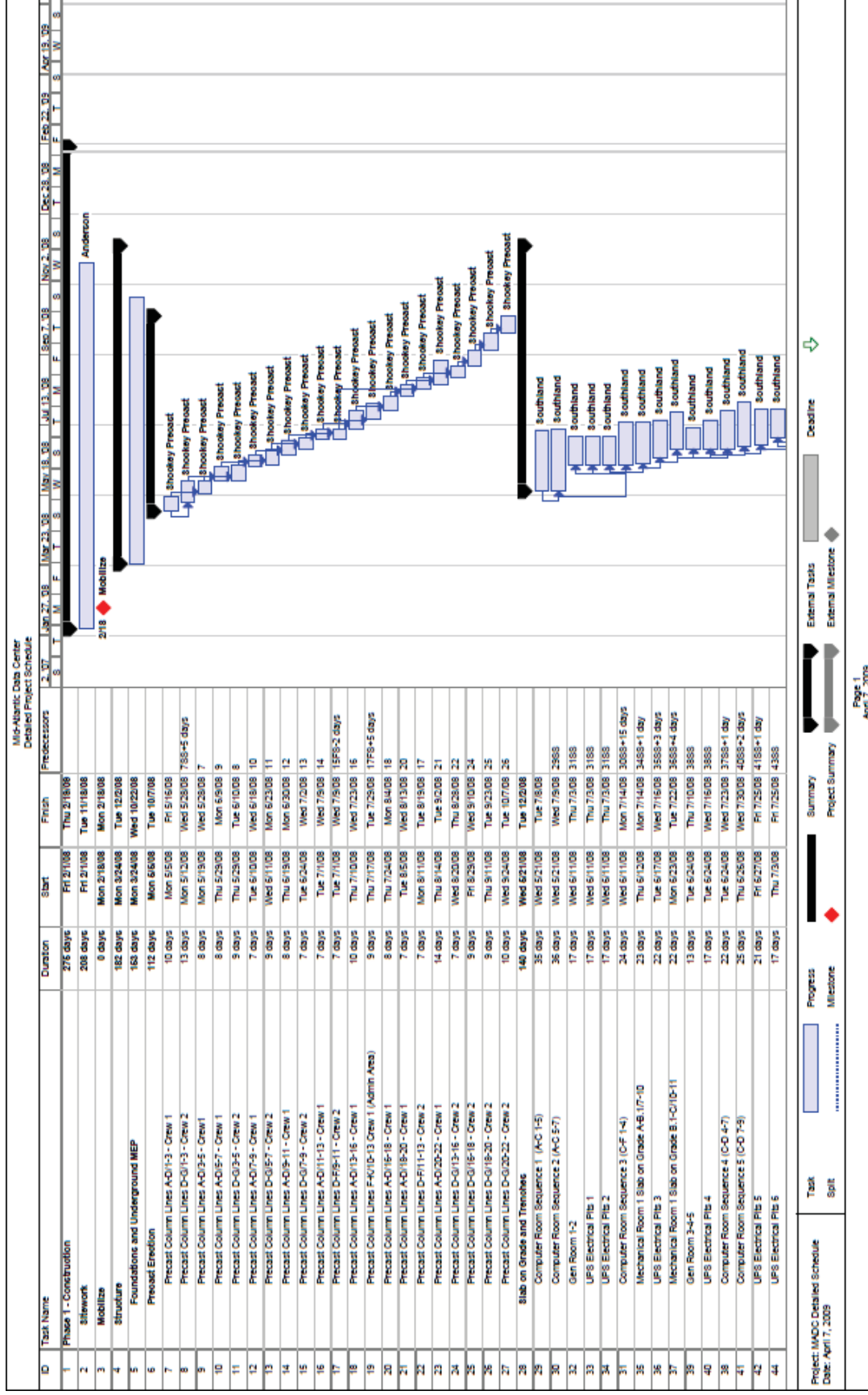
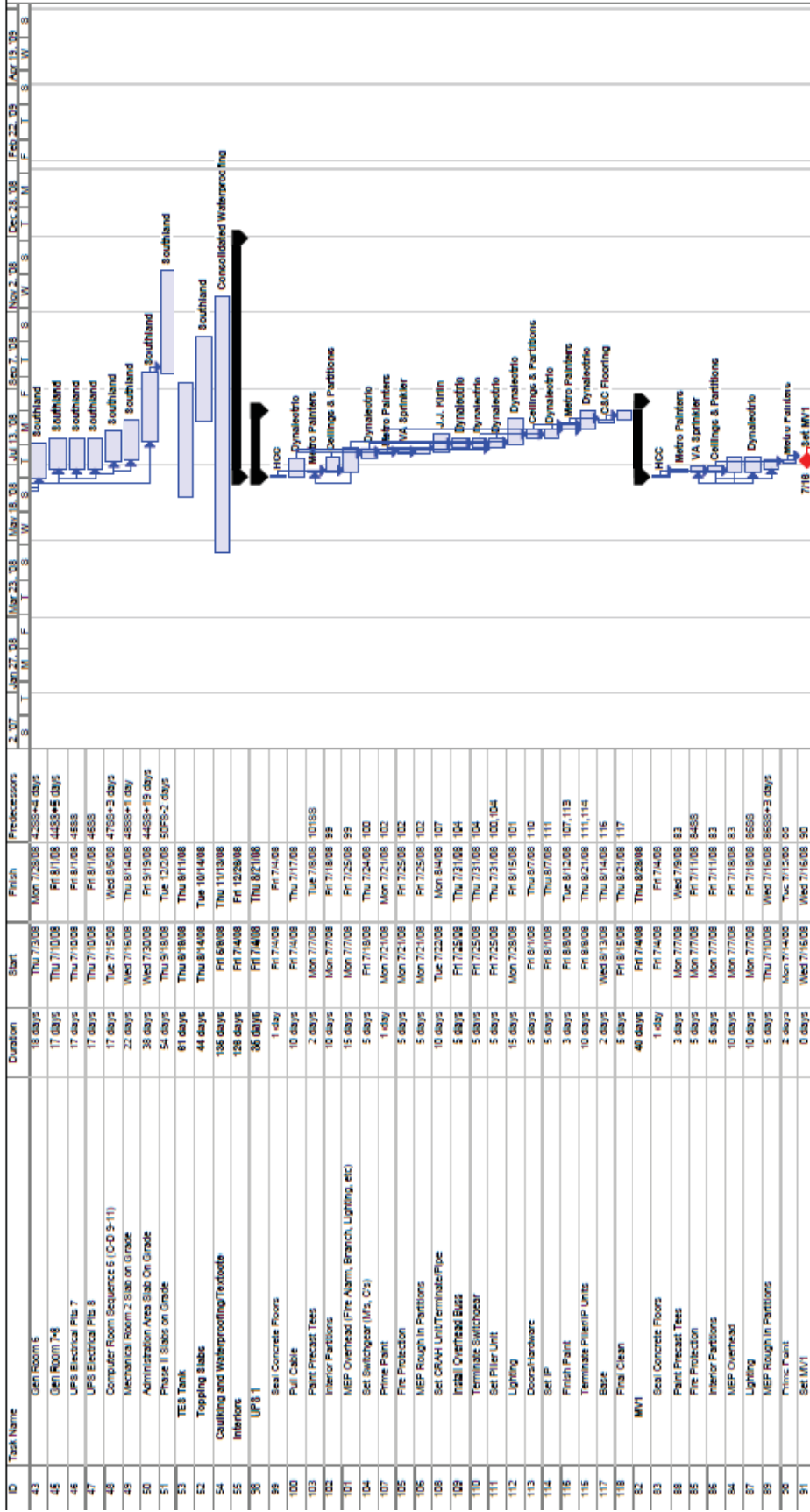


Figure 29 - Revised Overall Detailed Project Schedule

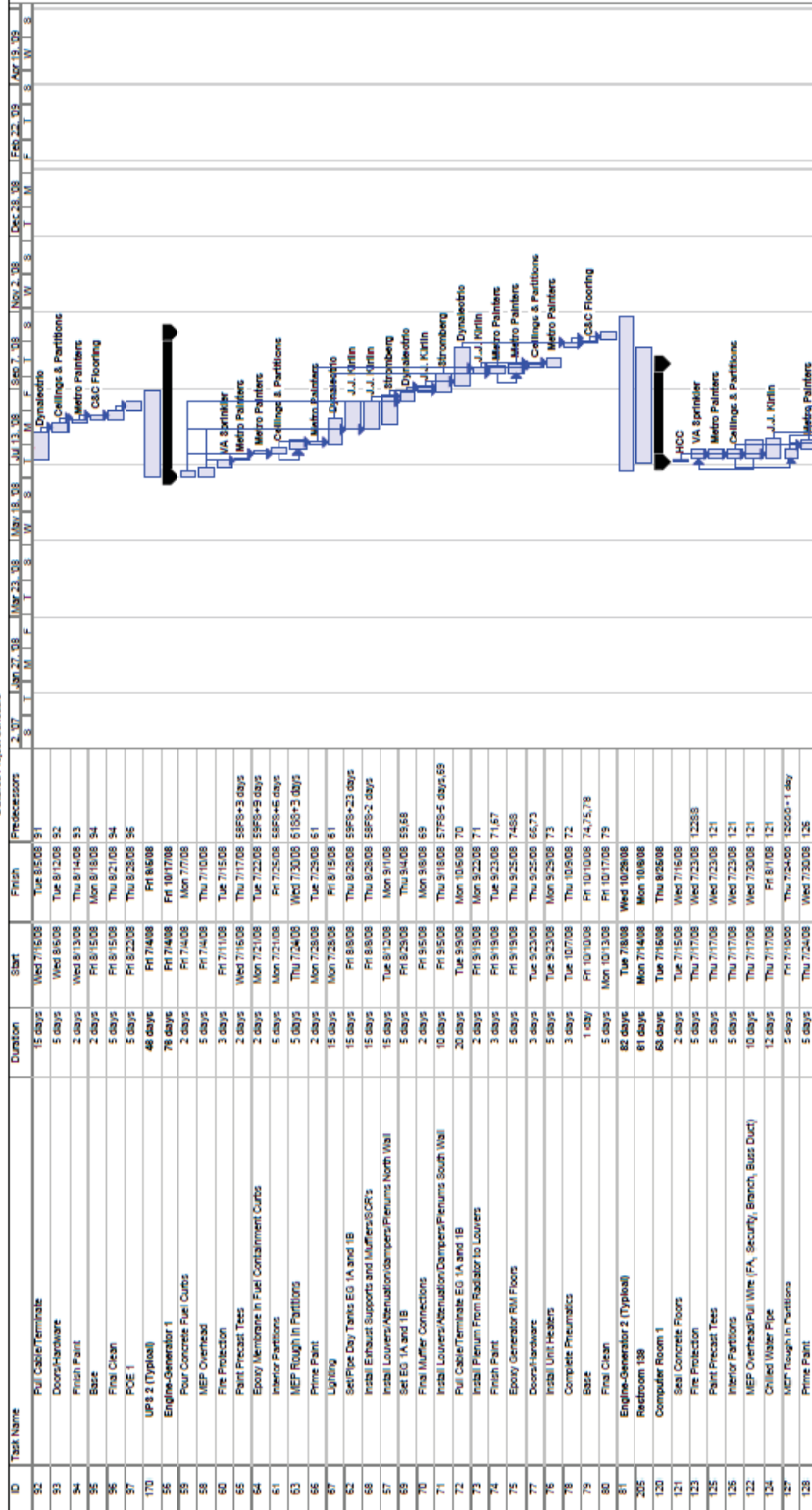
Mid-Atlantic Data Center
 Detailed Project Schedule



Project: IMDC Detailed Schedule
 Date: April 7, 2009

Legend:
 Progress: [Blue bar]
 Milestone: [Red diamond]
 Task Split: [Thin bar]
 Summary: [Thick bar]
 Project Summary: [Thick bar with diamond]
 External Tasks: [Grey bar]
 External Milestone: [Grey diamond]
 Deadline: [Green arrow]

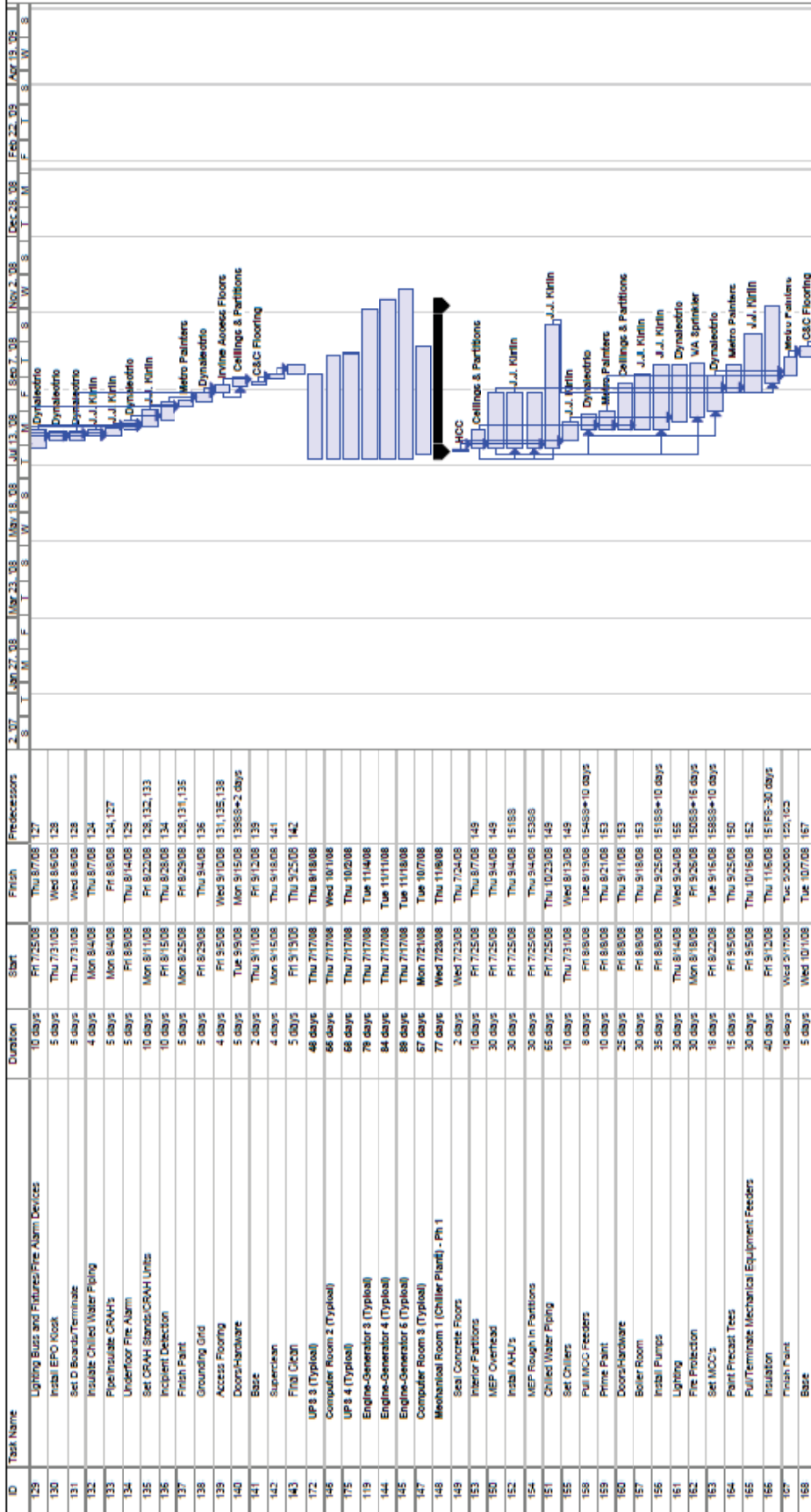
Mid-Atlantic Data Center
 Detailed Project Schedule



Project: IMDC Detailed Schedule
 Date: April 7, 2009

Legend:
 ■ Progress Milestone
 ■ Task Split
 ■ External Tasks
 ■ External Milestone
 ▽ Deadline

Mid-Atlantic Data Center
 Detailed Project Schedule

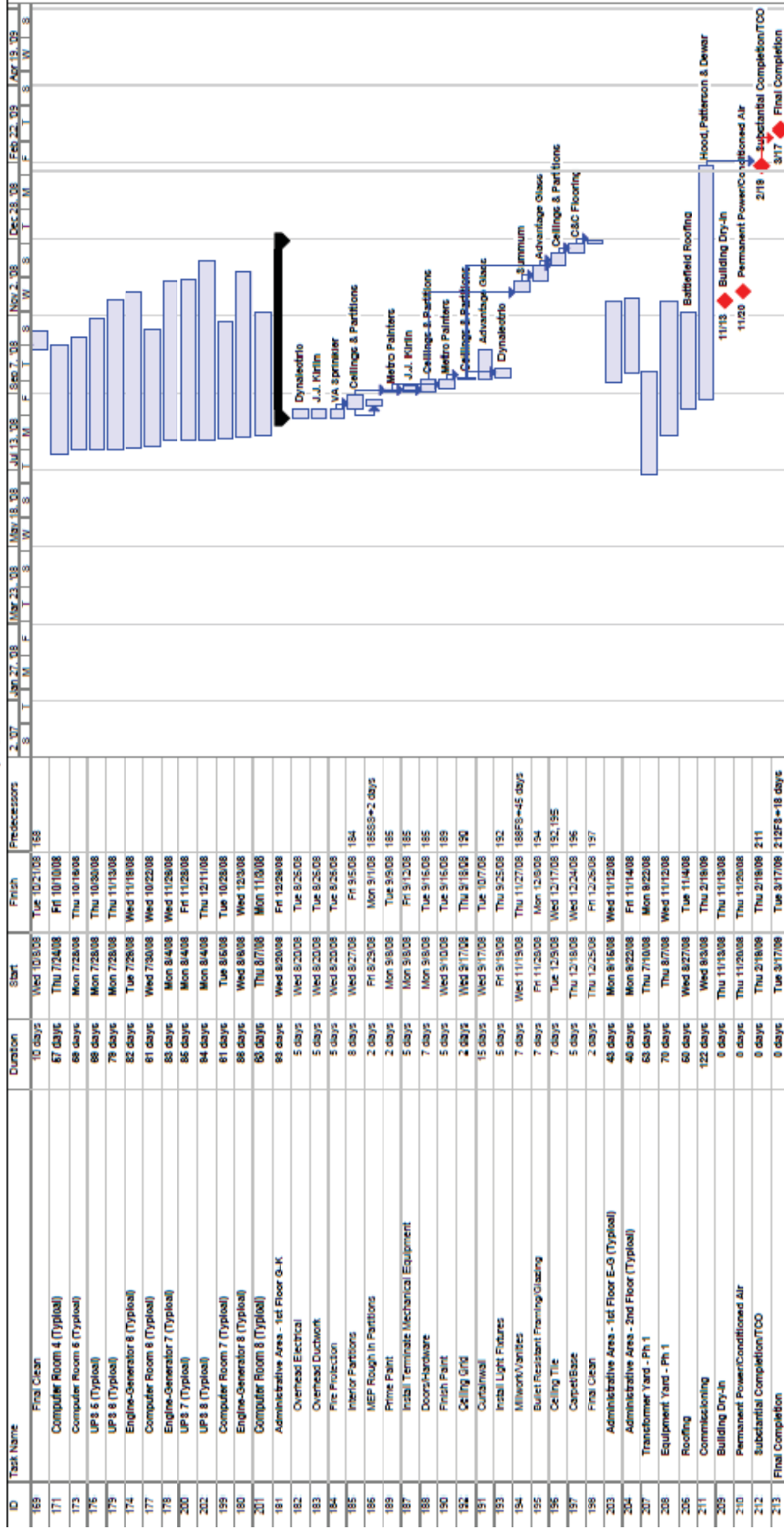


Project: IMDC Detailed Schedule
 Date: April 7, 2009

Legend:
 Task: [Bar] Milestone: [Diamond] Progress: [Bar with dots] Summary: [Bar with dots] External Tests: [Bar with arrow] Milestone: [Diamond] Project Summary: [Bar with arrow] External Milestone: [Diamond] Deadline: [Arrow]

Page 4
 April 7, 2009

Mid-Atlantic Data Center
 Detailed Project Schedule



Project: IMDC Detailed Schedule
 Date: April 7, 2009

Legend:
 Progress Milestone
 Task Milestone
 Summary Milestone
 External Tests Milestone
 External Milestone
 Deadline
 Final Completion

COST SAVINGS DATA

Table 31 – New Design: Formwork Unit Cost Savings Estimate

Description	Qty	Unit	# Rooms	Unit Price	Total
UPS Pits	4	Bundles/Pit	8	4000	\$ 128,000
Computer Room Trenches	0.625	Bundles/Rm	16	4000	\$ 40,000
Total					\$ 168,000

Table 32 – New Design: Concrete Unit Cost Savings Estimate

Div.	Description	Qty	Unit	Material	Labor	Equip	Total
03310	3000 psi concrete	1,405	CY	\$147,771	\$0	\$0	\$147,771
03318	Placing, SOG, pumped, up to 6" thick	1,405	CY	\$0	\$14,314	\$8,456	\$22,770
03325	CIP, slab on grade, 6" thick	67,183	SF	\$137,725	\$32,248	\$672	\$170,645
03210	Rebar, avg. price, A615, grade 40	68	Ton	\$62,642	\$0	\$0	\$62,642
	Formwork	1	LS	\$0	\$0	\$0	\$168,000
	Trench Fall Protection	1	LS	\$0	\$0	\$0	\$56,000
TOTAL				\$348,138	\$46,562	\$9,128	\$627,828

Table 33 - Existing Design: Unit Cost Estimate

Div.	Description	Qty	Unit	Material	Labor	Equip	Total
03310	3000 psi concrete	9,790	CY	\$1,029,855	\$0	\$0	\$1,029,855
03311	3500 psi concrete	2,167	CY	\$234,762	\$0	\$0	\$234,762
03312	4000 psi concrete	674	CY	\$75,130	\$0	\$0	\$75,130
03313	5000 psi concrete	6,204	CY	\$711,384	\$0	\$0	\$711,384
03314	Placing, topping slab, pumped, <6" thick	5,343	CY	\$0	\$50,489	\$29,759	\$80,248
03315	Placing, topping slab, pumped, 6"-10" thick	1,594	CY	\$0	\$13,169	\$7,764	\$20,933
03316	Placing, continuous footing, pumped	648	CY	\$0	\$5,724	\$3,380	\$9,104
03317	Placing, grade beam, pumped	674	CY	\$0	\$4,959	\$2,917	\$7,876
03318	Placing, SOG, pumped, up to 6" thick	12,143	CY	\$0	\$123,740	\$73,102	\$196,842

03319	Placing, SOG, pumped, over 6" thick	3,442	CY	\$0	\$24,612	\$14,492	\$39,104
03320	Placing, spread footing, pumped	1,526	CY	\$0	\$31,359	\$18,297	\$49,656
03321	CIP, topping slab, 4" slab	471,508	SF	\$674,257	\$216,894	\$132,022	\$1,023,173
03322	CIP, topping slab, 6" slab	76,167	SF	\$162,236	\$35,798	\$21,327	\$219,361
03323	CIP, spread footing	1,308	CY	\$264,190	\$79,566	\$746	\$344,501
03324	CIP, continuous strip footing, 24" x 12"	648	CY	\$90,598	\$35,127	\$330	\$126,055
03325	CIP, slab on grade, 6" thick	589,057	SF	\$1,207,568	\$282,748	\$5,891	\$1,496,206
03326	CIP, slab on grade, 8" thick	97,650	SF	\$274,397	\$49,802	\$977	\$325,175
03327	CIP Piers square, 36" x 36"	152	CY	\$57,660	\$31,913	\$4,963	\$94,537
03328	CIP Piers square, 24" x 24"	231	CY	\$99,635	\$63,610	\$9,848	\$173,093
03329	CIP Stairs, cast on ground	98	LF Nose	\$455	\$906	\$20	\$1,380
03330	CIP Stair Landing, cast on ground	277	SF	\$995	\$674	\$14	\$1,683
03220	WWF, sheets, 6 x 6 - W4 x W4 (4 x 4), A185	2,730	CSF	\$78,215	\$44,363	\$0	\$122,577
03221	WWF, sheets, 4 x 4 - W2.9 x W2.9 (6 x 6), A185	2,919	CSF	\$90,839	\$47,434	\$0	\$138,273
03210	Rebar, avg. price, A615, grade 40	473	Ton	\$436,486	\$0	\$0	\$436,486
	Formwork	1	LS	\$0	\$0	\$0	\$270,000
TOTAL				\$5,488,661	\$1,142,884	\$325,848	\$7,227,393